


A1f: Assessing the cultural ecosystem services from forests: current challenges and future scopes – 2

XXV IUFRO World Congress
Curitiba, 2nd October 2019


ALTERNATIVE MANAGEMENT MODELS FOR ADDRESSING EMERGING DEMAND ON FOREST-BASED CULTURAL SERVICES: A CASE-STUDY IN NORTHERN ITALY

*Giulia Corradini, **Mauro Masiero**, Davide Pettenella,
Ilaria Doimo and Paola Gatto*

TESAF Dept. – University of Padova (Italy)



The project leading to this application has received funding from the European Union's Horizon 2020 research and innovation programme under grant agreement No 676754.




Outline

1. Forest-based cultural ecosystem services: intro

2. A case study between opportunities & challenges

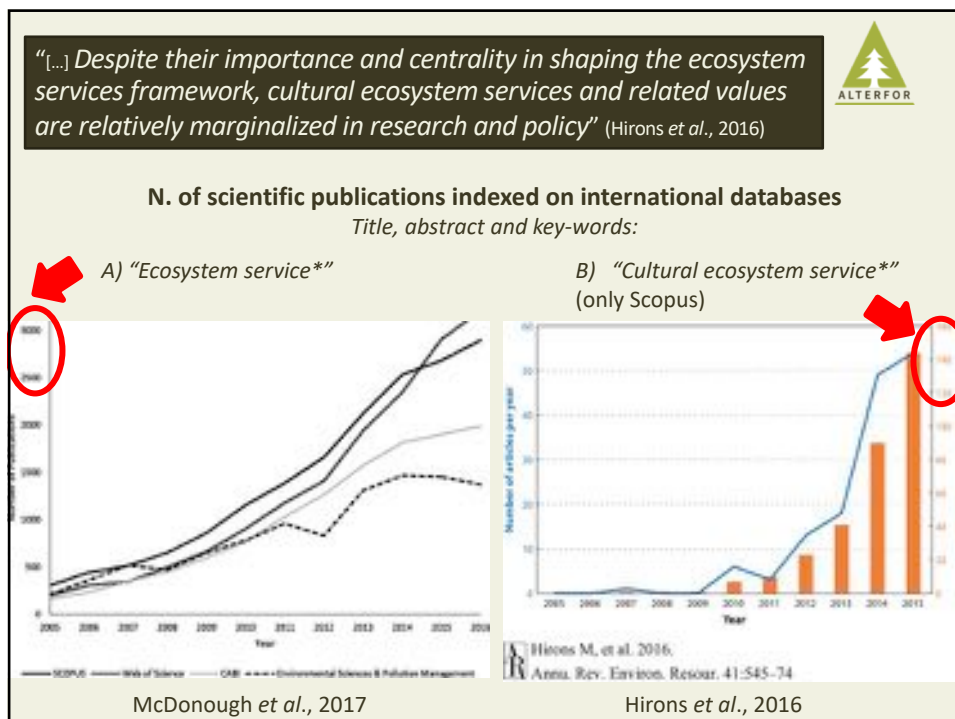
3. Action taken and way forward

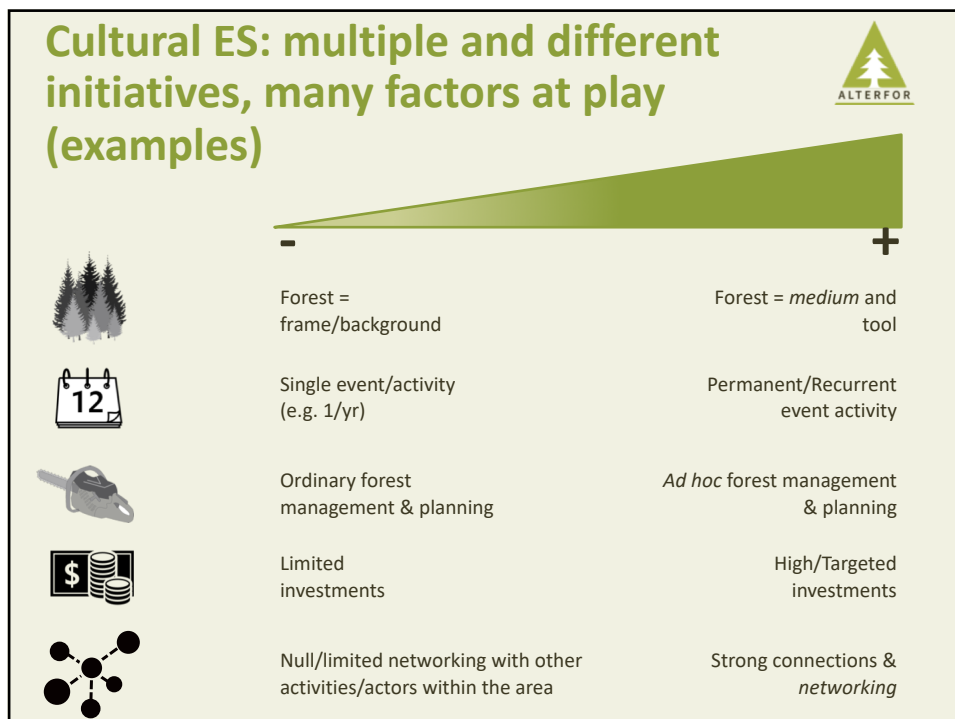
4. Concluding remarks

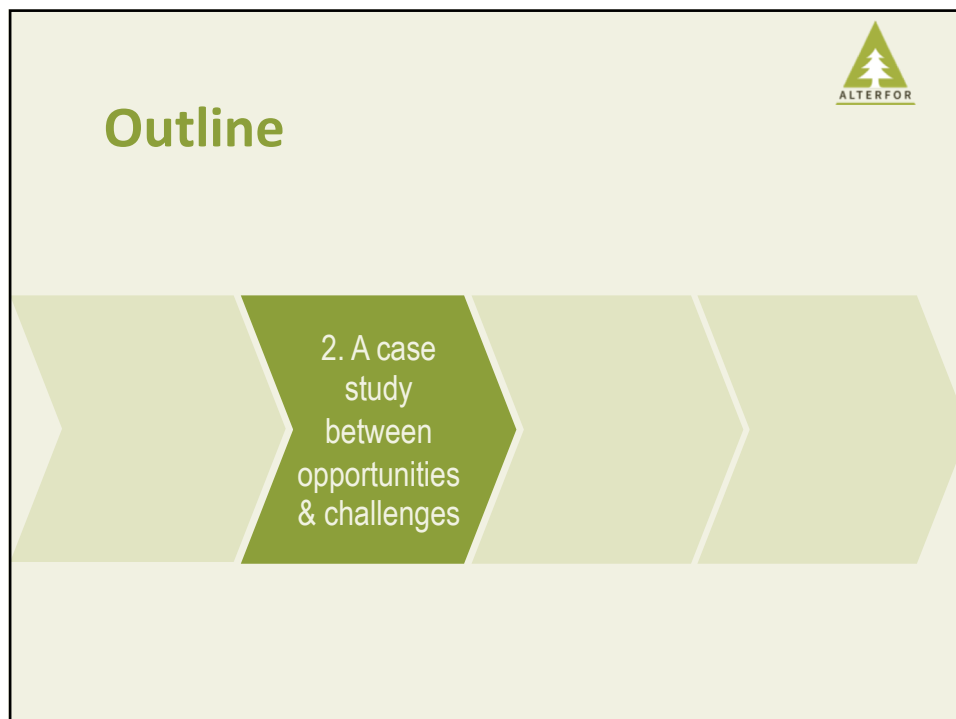
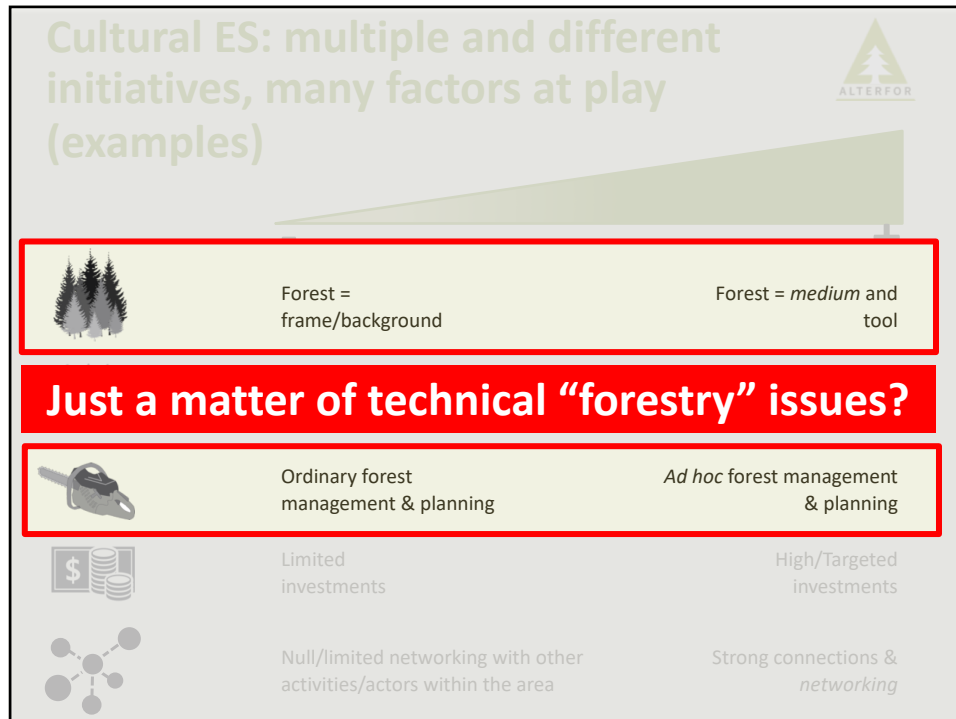



Outline

1. Forest-based cultural ecosystem services: intro



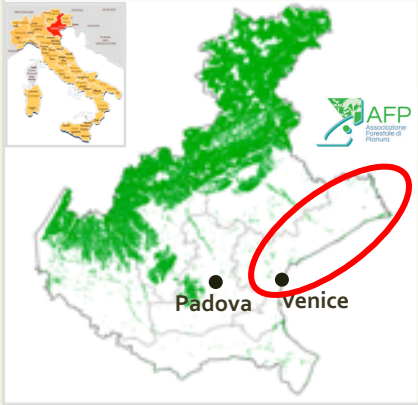






Lowland Forest Association

Associazione Forestale di Pianura – AFP



- Established in 2002
- An initiative of 8 municipalities in Eastern Veneto (350 ha)
- **Efficient, strategic and responsible management** of forest resources
- Now open also to private owners and managers → **16 members: 10 public + 6 private (500 ha)**

<http://www.forestedipianura.it>

A challenging context



Environmentally valuable sites
 (N2000, wetlands, old-growth forest remnants...)

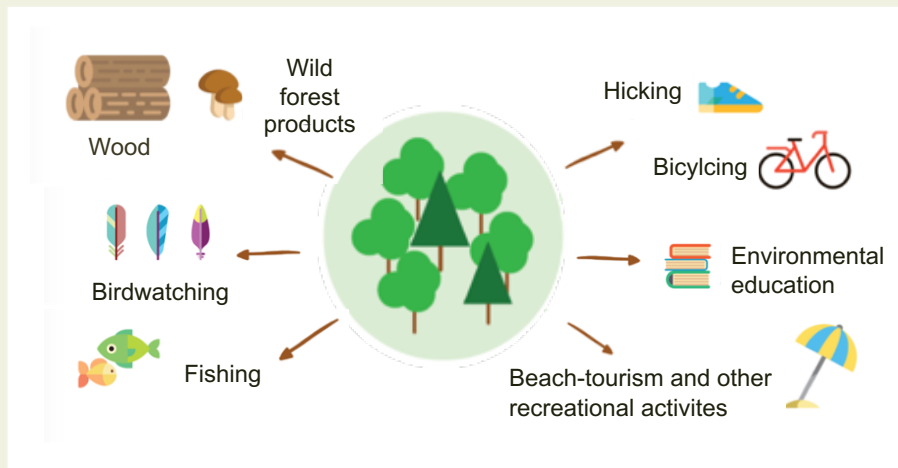
Fertile farmlands
 (annual crops)

Peri-urban, non-productive lowland forests close to densely populated areas

Tourism pressures & opportunities
 (3M visitors/year, Summer tourism)



Ensuring a broad range of benefits



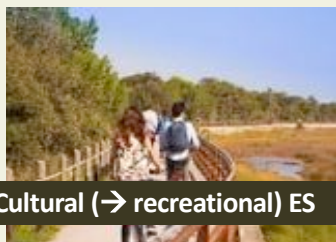
Which ecosystem services (ES) in particular?

Identification and analysis of **current forest management models (cFMM)** within **AFP, ES assessment** and participatory assessment of **stakeholders needs/expectations**

Literature review, field visits, Master and PhD research/thesis, meetings, 1 workshop...



2 priorities



Cultural (→ recreational) ES



Biodiversity conservation

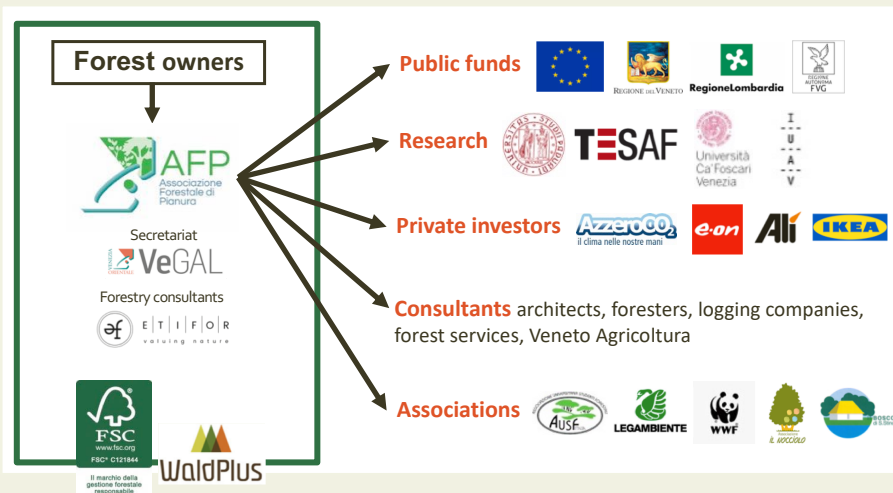
Source: agraria.org

Outline

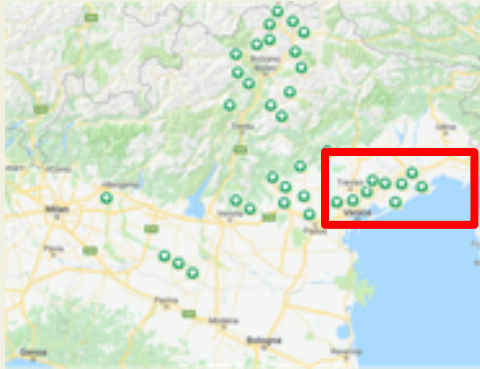


3. Action
taken and
way forward

AFP Governance model



FSC Ecosystem services certification



- FSC certified since 2017
- Includes the Lowland Forest Association (AFP)
- More than **70 forests** in Northern Italy
- More than **1,000 hectares**
- Conservation forests & productive forests; public & private owners



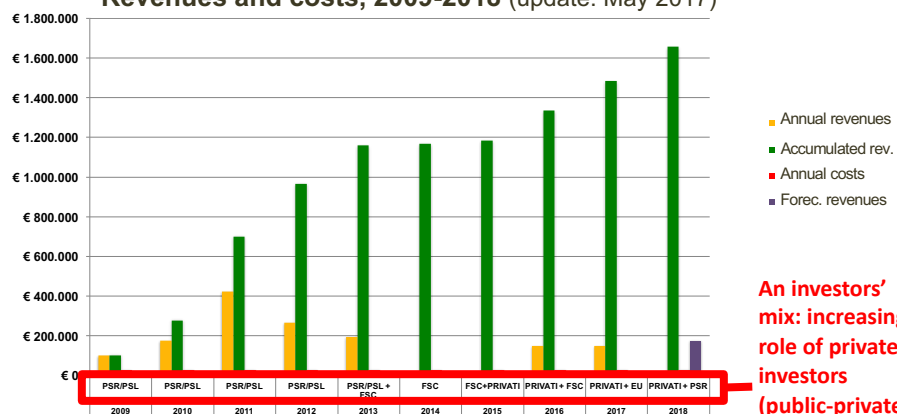
2018-2019: world-first application of the FSC Ecosystem Services Procedure for a full set of 5 ecosystem services

C-sequestration, tourism/recreation, biodiversity conservation, water-related services, soil protection

Fundraising



Revenues and costs, 2009-2018 (update: May 2017)



An investors' mix: increasing role of private investors (public-private partnerships)

In total: 1.7 M €

1 € invested by AFP members = 7.1 € for management

Matching management and ES



Identification and analysis of **current forest management models (cFMM)** within AFP, ES assessment and stakeholders needs/expectations

Literature review, field visits, Master and PhD research/thesis, meetings, 1 workshop...



2 priorities: (i) **cultural (recreational) ES**, (ii) **biodiversity conservation**

Identification of alternative **FMM (aFMM)** and discussion with stakeholders

1 workshop & demo-day (including field and demonstration activities), ES assessment, guidelines...



**Workshop and demo-day,
21st April 2018**
(Bosco di Olmè, Cessalto – TV)



Photo credits: Giulia Corradini

Barriers on the way towards change & innovation

- Technical/silvicultural aspects
- People not used anymore to active FM (harvesting as a shame)
- Need to coordinate/manage different interests



Guidelines being developed within Alterfor project (work in progress)



Guidelines on FM & cultural services, including:

- Silvicultural and management measures
- Mitigation actions on negative aspects on environment/landscape
- Indications for infrastructures (equipped areas, paths...)
- Economic and normative issues
- Governance aspects

Additional coming-soon activities:

- On-site and off-site info
- Demonstration site
- Participatory management plan





Way forward

Improving and expanding the network by inspiring and supporting more forest owners and new actors:

- **Replicating/exporting** the “model”
- Help forest owners “**growing**” and **learning**
- Creating more **public-private** cooperation opportunities
- **Expanding** the Association = **scale/differentiation**
- Encouraging **multifunctional FM** = **integrated FM** at stand/landscape scale
- Attracting **non-forest actors**

Case 1: Promoting cultural ES initiatives in close-by public forests
(mobilizing steady public owners)

LYCAENIDAE
LAND ART
INSTALLATION

BOSCO
NORDIO
[VE]

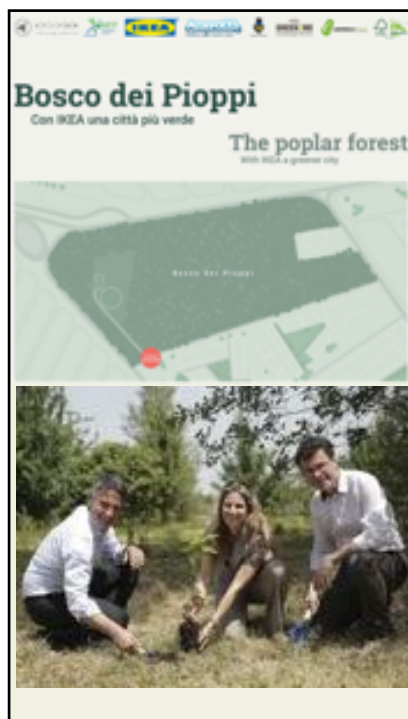
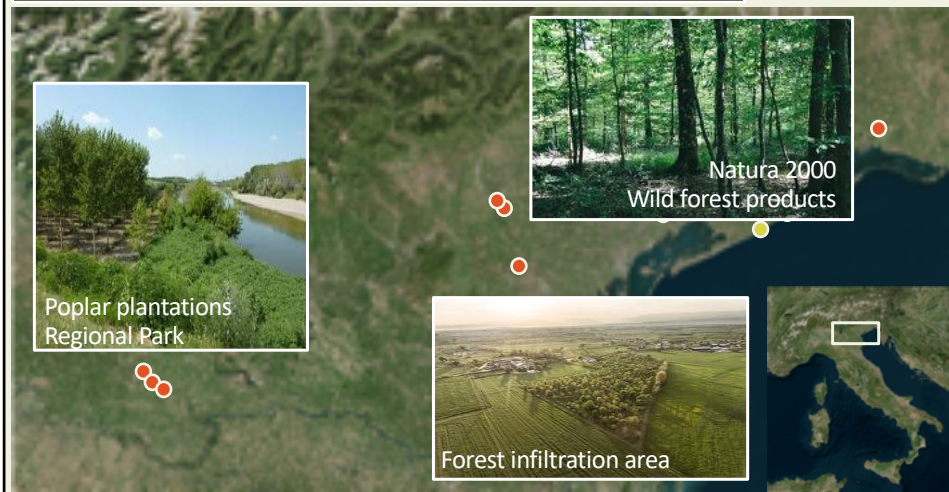
11

Case 2: Attracting new members, expanding and differentiating the Association

(private owners, productive forests, protected areas...)



● AFP Founding members
● AFP New members



Case 3: Attracting new investors and actors, creating more opportunities within/for the Association



Outline



4.
Concluding
remarks

Addressing emerging social demand on forests and develop tailored management solutions is a **challenging playing-field**



Technical (=silvicultural) aspects are important...but future FMMs addressing challenges **cannot** be limited to them

They shall include mechanisms to innovate and enhance governance of natural resources at the landscape level with an active role of multiple actors

