



69th Annual meeting of the German Forest Association

ALTERFOR Session, Dresden, 10th May 2019

LOWLAND FOREST ASSOCIATION (ITALY): INNOVATIVE FOREST MANAGEMENT SOLUTIONS BEYOND SILVICULTURE

*Mauro Masiero¹, Federico Pinato²,
Giulia Corradini¹, Alex Pra² and Davide Pettenella¹*

¹TESAF Dept. – University of Padova; ²Etifor Srl



The project leading to this application has received funding from the European Union's Horizon 2020 research and innovation programme under grant agreement No 676754.



Contents

1. Lowland Forest Association: an overview
2. ALTERFOR activities within the area
3. Some examples
4. Some final considerations



Contents

1. Lowland Forest Association: an overview
2. ALTERFOR activities within the area
3. Examples of best practices
4. Some final considerations

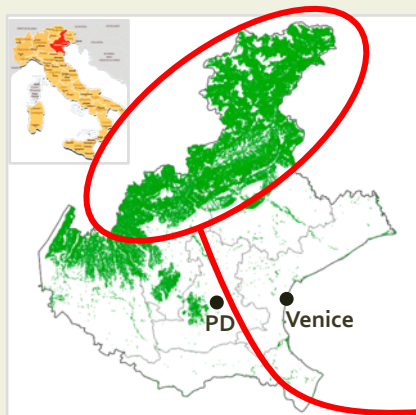
The context: Veneto



Forest area in Veneto (ha)

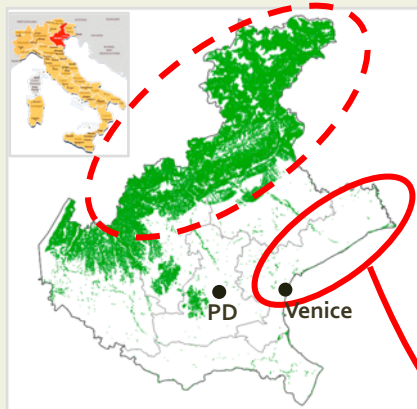
2005	*2015	2005-2015 %Var	National % Var.
444,766	465,624	+4.7%	+6.2%

Source: National forest inventories
*preliminary figures



- Approx. **4%** of national forests
- **25%** of regional area
- About **+5,000ha/yr** (natural expansion)
- MAI = **4.2 m³/ha/yr** (national: 4.1m³/ha/yr)
- Removals: about **22% MAI (1.2 m³/ha/yr)**
- Most productive forests: **alpine area** (+ poplar forest plantations)
- A key hub for **wood-furniture industry**: **12k companies, 70k employees** (dependency on imports)

Veneto: ALTERFOR Case-study area (CSA)

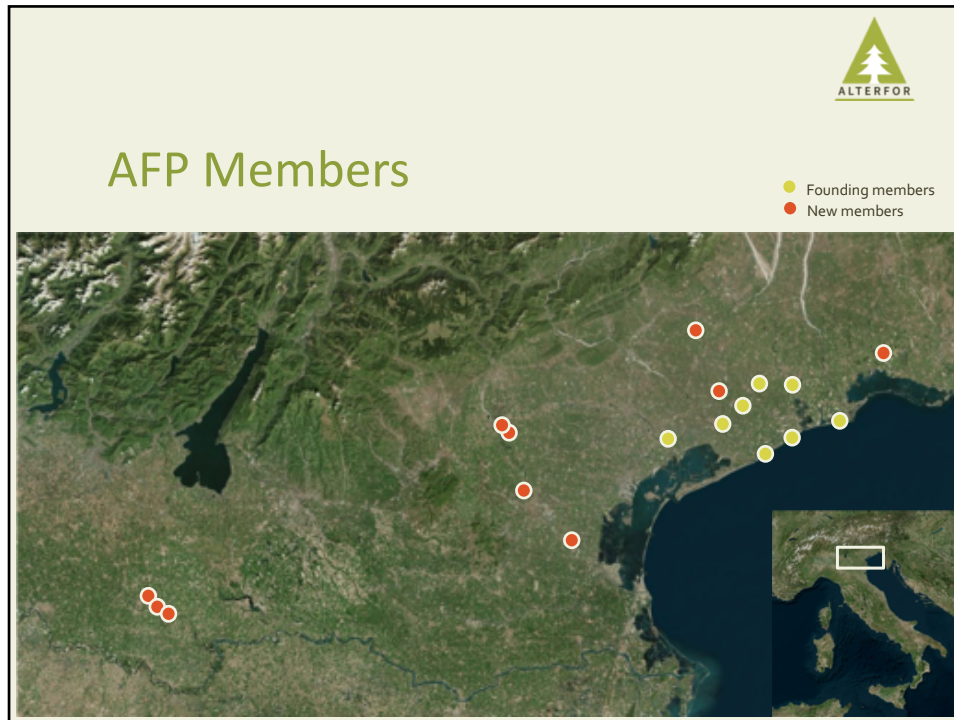


ALTERFOR Case-study area (CSA): Lowland Forest Association
(Associazione Forestale di Pianura, AFP)

Lowland Forest Association (AFP)




- Established in 2002
- An initiative of 8 municipalities in Eastern Veneto (350 ha)
- **Efficient, strategic and responsible management** of forest resources
- Since 2011 **Etifor** provides strategic advisory
- Now open also to private owners and managers → **16 members: 10 public + 6 private (500 ha)**





Three (main) forest types within the CSA



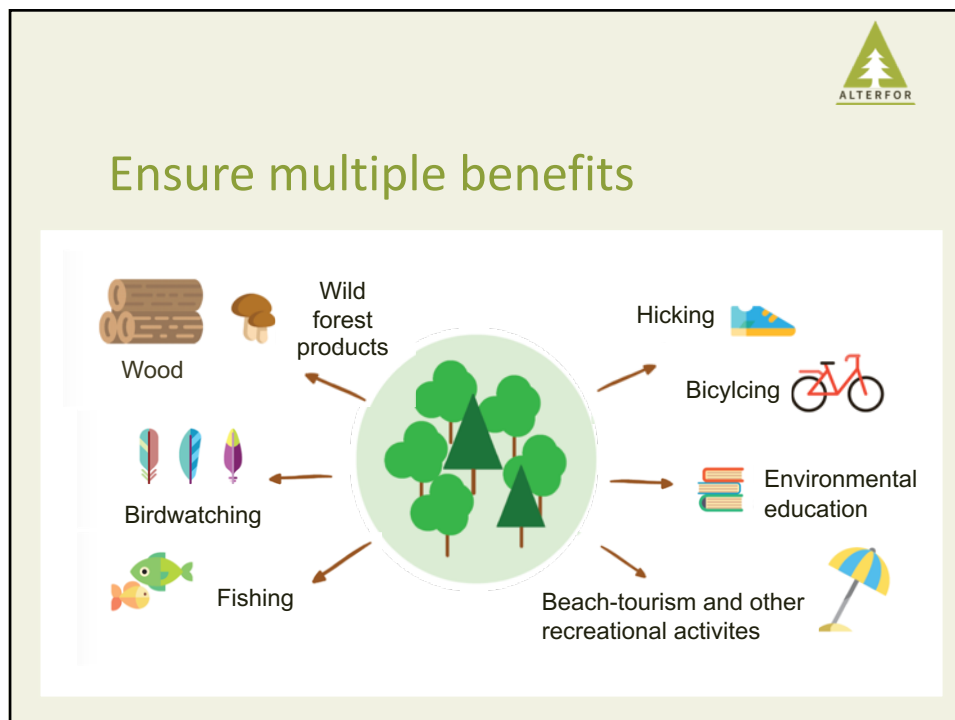
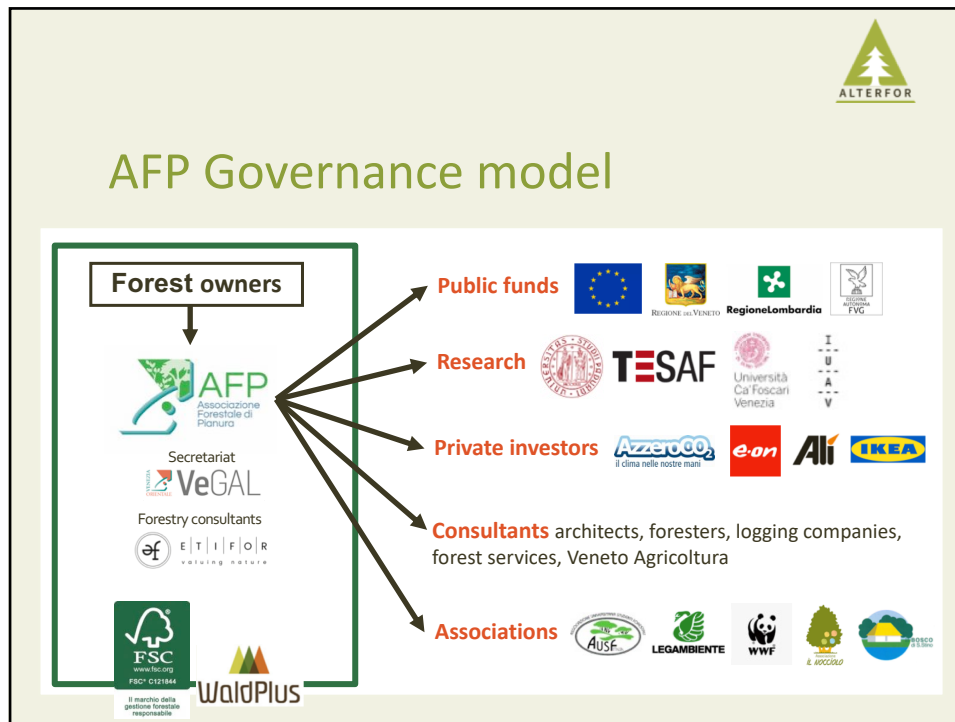
Oak hornbeam forests
Remnant/Old-growth with some new plantations



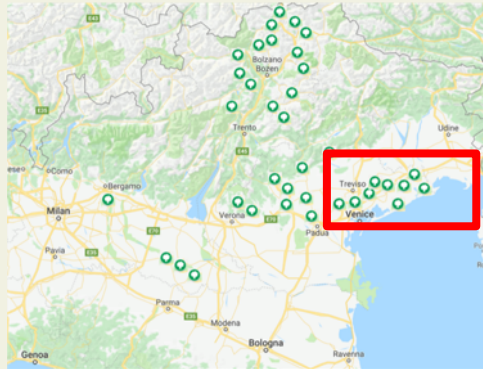
Riparian forests
Remnant/Old growth (black poplar and white willow)



Coastal forests
Mainly planted forests. The holm oak forests has shifted to pine forests (however important for tourism)



FSC Ecosystem services certification



- FSC certified since 2017
- Includes the Lowland Forestry Association (AFP)
- More than **70 forests** in Northern Italy
- More than **1,000 hectares**
- Conservation forests & productive forests (timber, firewood + wild forest-products, tourism/recreation, biodiversity conservation, water-related services, soil protection)
- Public and private owners



2018 - 2019: world-first application of the FSC Ecosystem Services Procedure for a full set of 5 ecosystem services



AFP work & services:

1. Forest Management Plan
2. FSC® group certification
3. Research & innovation
4. Networking & lobby



Contents

1. Lowland Forest Association: an overview
2. ALTERFOR activities within the area
3. Some examples
4. Some final considerations

Main activities



Identification and analysis of **current forest management models (cFMM)** within AFP, ES assessment and stakeholders needs/expectations

Literature review, field visits, Master and PhD research/thesis, meetings, 1 workshop...



2 priorities: (i) **cultural and recreational ES**, (ii) **biodiversity conservation**

Identification and preliminary assessment of cultural ES and forest-care initiatives (management and organizational models) in Italy (PhD research within PhD LERH program @ Dip. TESAF, *in fieri*)

Identification of alternative **FMM (aFMM)** and discussion with stakeholders

1 workshop & demo-day (including field and demonstration activities), ES assessment, guidelines...

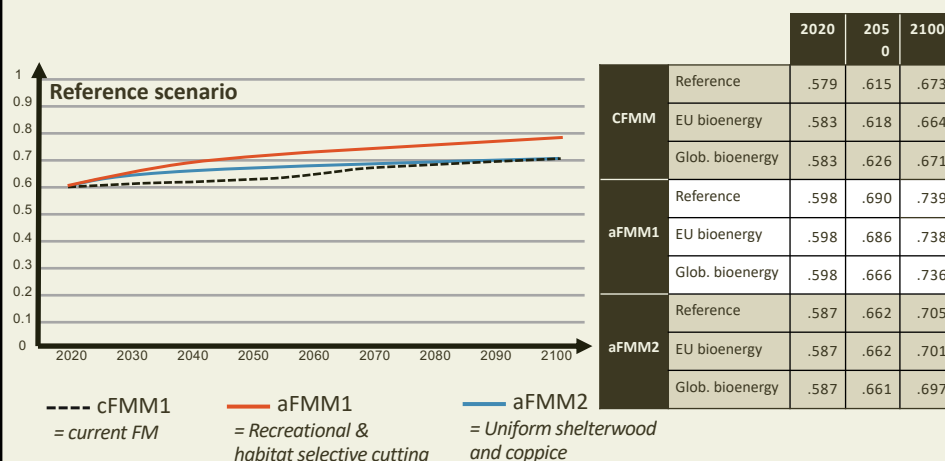




FMMs

- **Current FMM (cFMM)** → minimal selective cutting
- **Alternative FMM1 (aFMM1)** → Recreational & habitat selective cutting
- **Alternative FMM2 (aFMM2)** → Uniform shelterwood and coppice

Recreational and Aesthetic value of the Forested Landscape (RAFL)







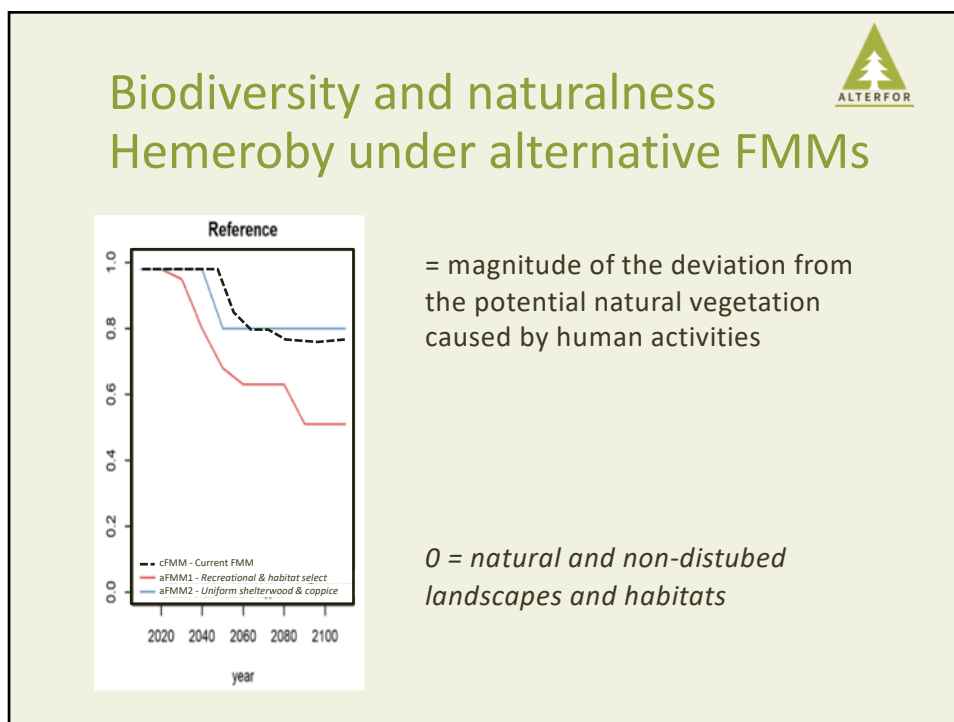
Workshop and demo-day,
21st April 2018
 (Bosco di Olmè, Cessalto – TV)





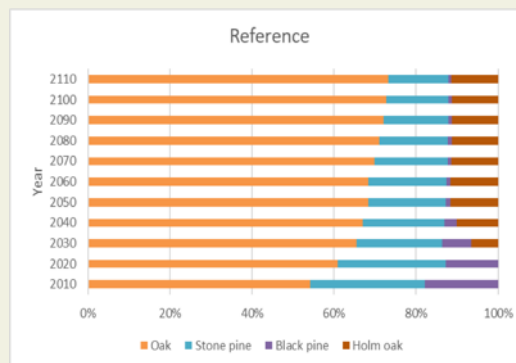



Photo credits: Giulia Corradini





Species distribution under aFMM1



Support to local oaks
(*pedunculate oak* &
holm oak) at the expense
of artificial conifer stands

Recovery of natural black-
pine stands

= renaturalization of
forest stand composition

→ Additional benefit:
lower fire risks



Preliminary comments

aFMM: Recreational and habitat selective management model
→ best alternative according to the local context and
stakeholders' needs/expectations

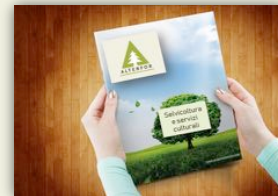
- Selective cutting with close-to-nature approach
- Including non-silvicultural practices: e.g. fencing of some areas, multilanguage informative boards, birdwatching sheds, waste baskets, benches, creation and maintenance of paths, bike routes...
- Just a matter of technical solutions and hard-skills?

Alterfor guidelines (work in progress)



Guidelines on FM & cultural services, including:

- Silvicultural and management measures
 - Mitigation actions on negative aspects on environment/landscape
 - Indications for infrastructures (equipped areas, paths...)
 - Economic and normative issues
 - Governance aspects
-
- On-site and off-site info
 - Short promotional video
 - Paper on the main national forestry journal
 - Launching event



Looking beyond the CSA



- Budget constraints for public bodies (municipalities): **public-private partnerships** as a key-tool for the provision of **public goods**?
- Tailoring management solutions: how to favor the provision of **different ecosystem services**?
- AFP is expanding to new areas and different owners with **different needs/expectations**: how to encourage **synergies**?



Contents

1. Lowland Forest Association: an overview
2. ALTERFOR activities within the area
3. Some examples
4. Some final considerations



AFP Members


- Founding members
- New members



Looking ahead...





- Budget constraints for public bodies (municipalities): **public-private partnerships** as a key-tool for the provision of **public goods**?
- Tailoring management solutions: how to favor the provision of **different ecosystem services**?
- AFP is expanding to new areas and different owners with **different needs/expectations**: how to encourage **synergies**




Bosco dei Pioppi
Con IKEA una città più verde

The poplar forest
With IKEA a greener city



1. Reforestation activities on public land financed by/in cooperation with private businesses → co-benefits

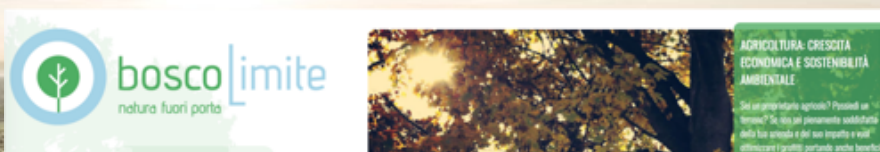


Looking ahead...



- Budget constraints for public bodies (municipalities): **public-private partnerships** as a key-tool for the provision of **public goods**?
- Tailoring management solutions: how to favor the provision of **different ecosystem services**?
- AFP is expanding to new areas and different owners with **different needs/expectations**: how to encourage **synergies**?

2. Valuing forest-multifunctionality Groundwater rechargement and co-benefits



New lowland forest areas (conversion from maize croplands)
2.5 ha of forests:

- **12 000 m³ H₂O** saved every year
- **200 l/sec** water recharged (1 Million m³/ha/year)
- **1 500 ton CO₂** sequestered in 30 years and other co-benefits

www.boscolimite.it

Nuove specie animali	Riduzione emissioni di anidride carbonica in Kg di CO ₂	Litri di acqua risparmiata
0,00 kg	720,71 lt	1,02 kg
Quantità di rifiuti ed inquinanti non ammessi	Acqua immessa in falda	Energia rinnovabile prodotta

Picture credits: Matteo Mocellin




Private sector donors

Public sector partners (municipalities) & Technical partners

SPONSOR



PARTNER

Looking ahead...

- Budget constraints for public bodies (municipalities): **public-private partnerships** as a key-tool for the provision of **public goods**?
- Tailoring management solutions: how to favor the provision of **different ecosystem services**?
- AFP is expanding to new areas and different owners with **different needs/expectations**: how to encourage **synergies**?

3. Twinning wood production and biodiversity conservation

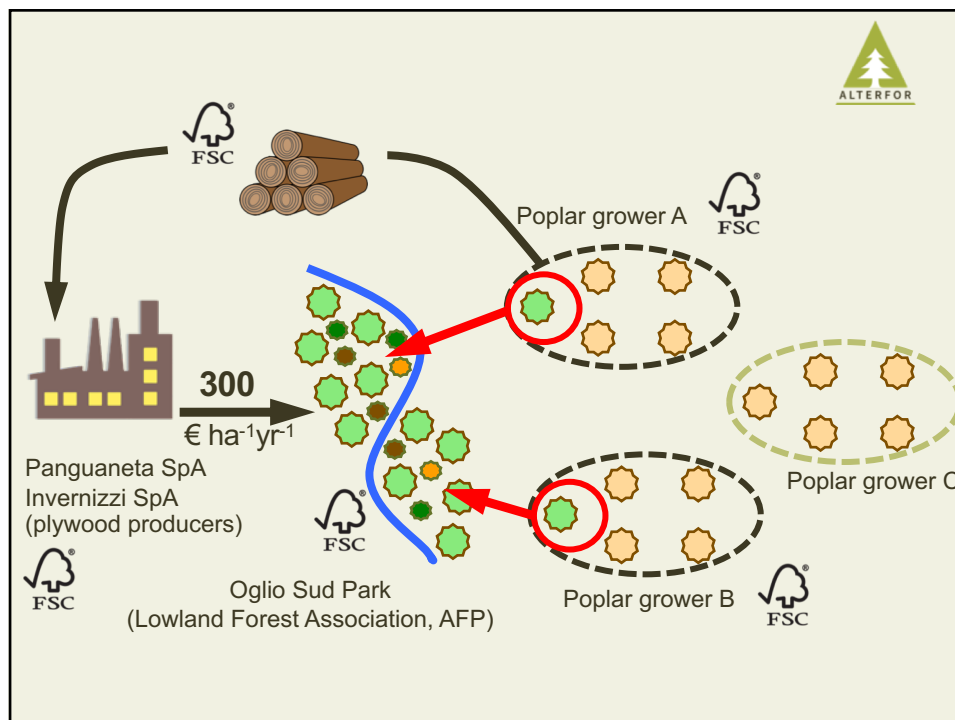


Poplar plantations in Italy (ab. 60 000 ha) provide **>50%** of domestic industrial roundwood

FSC FM standard for Italy (2018) – Criterion 6.5

- The Organization* shall **identify and protect** representative sample areas of native ecosystems [...]. Where representative sample areas **do not exist** or are **insufficient**, The Organization shall **restore a proportion of the Management Unit* to more natural conditions**.
- **Indicator 6.5.5:** Representative sample areas shall cover at least **10% of the Management Unit (MU)**.

→Note: For MU < 50 ha representative areas outside the MU can be appointed





Contents

1. Lowland Forest Association: an overview
2. ALTERFOR activities within the area
3. Some examples
4. Some final considerations

Changing scenarios, changing social demand
from forests, changing forest owners' attitudes,
changing forest management models...a
challenging playing-field



FMM for addressing all these challenges **cannot** be
limited to technical (=silvicultural) aspects

They shall include mechanisms to innovate and enhance
governance of natural resources at the landscape level

